

41-93

THE VILLAS OF GREEN GLEN III

LYING IN SECTION 35, TOWNSHIP 45 SOUTH,
RANGE 42 EAST, PALM BEACH COUNTY, FLA.

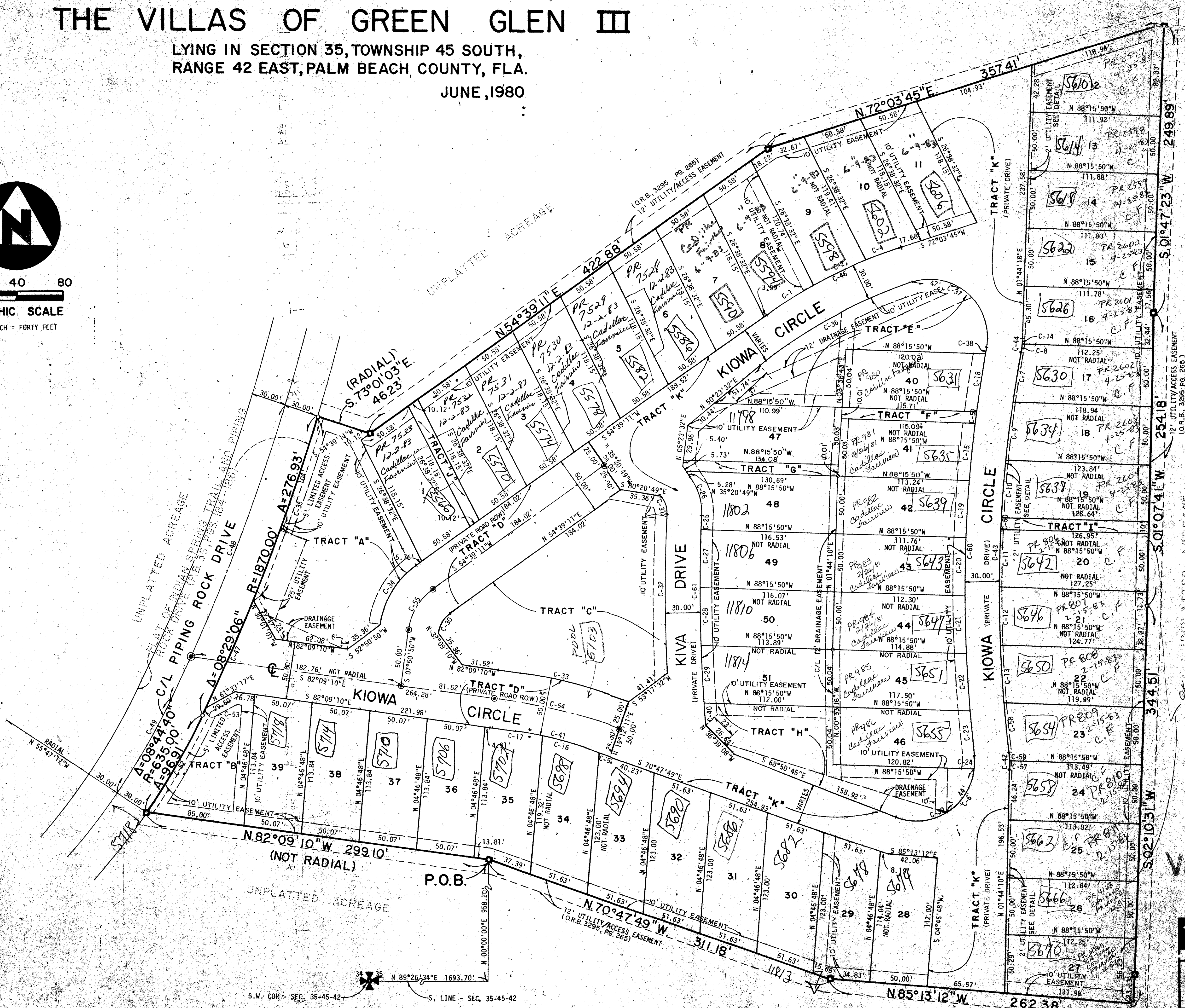
JUNE, 1980

93

STATE OF FLORIDA
COUNTY OF PALM BEACH
THIS PLAT WAS FILED
FOR RECORD AT _____ M.
THIS DAY OF _____
A.D. 1980 AND DULY RECORD
ED IN PLAT BOOK _____ ON
PAGE _____ AND
JOHN B. DUNKLE, CLERK
CIRCUIT COURT
BY _____ DC.



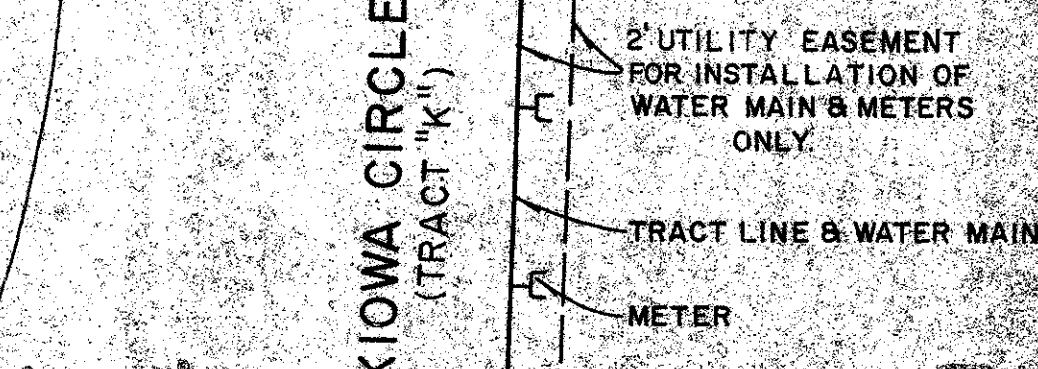
0 40 80
GRAPHIC SCALE
ONE INCH = FORTY FEET



CURVE DATA

CURVE NUMBER	CENTRAL ANGLE	RADIUS	ARC
C-1	06°16'44"	426.13'	46.70'
C-2	06°43'40"	426.13'	50.04'
C-3			
C-4	04°24'10"	426.13'	32.74'
C-5			
C-6	177°40'27"	50.00'	102.69'
C-7	02°04'29"	1203.00'	43.56'
C-8	04°53'13"	80.00'	6.82'
C-9	02°23'26"	1203.00'	50.19'
C-10	02°23'08"	1203.00'	50.06'
C-11	02°22'54"	1203.00'	50.00'
C-12	02°23'03"	1203.00'	50.06'
C-13	02°23'27"	1203.00'	50.20'
C-14	03°22'08"	80.00'	4.70'
C-15	02°19'46"	1233.00'	50.13'
C-16	05°22'05"	542.71'	50.86'
C-17	04°47'04"	542.71'	45.32'
C-18	02°20'25"	1233.00'	50.36'
C-19	02°19'59"	1233.00'	50.03'
C-20	02°19'23"	1233.00'	50.01'
C-21	02°19'36"	1233.00'	50.07'
C-22	02°20'01"	1233.00'	50.22'
C-23	01°48'28"	1233.00'	38.90'
C-24	13°07'09"	50.00'	11.45'
C-25	00°27'38"	1461.28'	11.75'
C-26	37°59'44"	55.00'	36.47'
C-27	01°57'38"	1461.28'	50.00'
C-28	01°57'45"	1461.28'	50.05'
C-29	01°57'59"	1461.28'	50.15'
C-30	46°48'21"	25.00'	20.42'
C-31	37°59'44"	25.00'	16.56'
C-32	05°16'03"	1491.28'	137.10'
C-33	11°21'21"	592.71'	117.47'
C-34	46°48'21"	75.00'	61.27'
C-35	05°08'11"	1870.00'	167.64'
C-36	21°40'13"	396.13'	149.82'
C-37	117°54'46"	50.00'	102.91'
C-38	00°15'33"	1233.00'	5.58'
C-39	104°33'17"	50.00'	91.24'
C-40	00°45'25"	1461.28'	19.30'
C-41	11°21'21"	542.71'	107.56'
C-42	08°15'21"	80.00'	11.52'
C-43	16°30'42"	1203.00'	346.69'
C-44	08°15'21"	80.00'	11.53'
C-45			
C-46	17°24'34"	426.13'	129.48'
C-47	03°08'36"	1870.00'	102.59'
C-48	08°29'06"	1840.00'	272.49'
C-49	08°44'40"	605.00'	92.33'
C-50	00°28'35"	1203.00'	10.00'
C-51	00°27'49"	1233.00'	9.98'
C-52	08°44'40"	635.00'	96.91'
C-53	00°12'19"	1870.00'	6.70'
C-54	11°21'21"	567.71'	112.52'
C-55	46°48'21"	50.00'	40.85'
C-56	01°12'12"	542.83'	11.40'
C-57	02°41'37"	80.00'	3.76'
C-58	02°01'47"	1203.00'	42.62'
C-59	05°33'44"	80.00'	7.77'
C-60	16°30'42"	1233.00'	355.33'
C-61	07°06'25"	1461.28'	181.25'

0259-303



Villas of Green Glen
DETAIL
N.T.S.

41/93
BENCH MARK
land surveying and mapping, inc.
WEST PALM BEACH, FLORIDA

HOUSING TRACT "K"
AT INDIAN SPRING